



# KURIYAMA Layflat

Hose & Accessories



**KURIYAMA**  
OF AMERICA, INC.

# Hose Product Selection Chart

CATEGORY	PVC					PVC/Nitrile		
CATALOG PAGE	6	5	7	8	9	12	15	16
PRODUCT	Vinylflow®	Vinylflow® EZ-Lite™	Ironsides®	PVC Layflat Assemblies Blue	PVC Layflat Assemblies Red	OROFLEX® 10	OROFLEX® 20	OROFLEX® 20
MATERIAL	PVC	PVC	PVC	PVC	PVC	PVC/Nitrile	PVC/Nitrile	PVC/Nitrile
COLOR	Blue	Blue	Red	Blue	Red	Black	Yellow	Black
APPLICATION	Irrigation Agriculture	Industrial Rental	Mining Industrial	Industrial Rental	Industrial Rental	Industrial	Liquid / Air	Water Transfer Manure Transfer
3/4"	–	100 psi	–	–	–	–	480 / 360 psi	–
1"	–	85 psi	–	–	–	–	550 / 415 psi	–
1 1/4"	–	85 psi	–	–	–	–	–	–
1 1/2"	80 psi	65 psi	150 psi	70 psi	140 psi	200 psi	305 / 225 psi	–
2"	80 psi	65 psi	150 psi	65 psi	128 psi	200 psi	305 / 225 psi	–
2 1/2"	80 psi	–	150 psi	–	–	200 psi	300 / 185 psi	–
3"	70 psi	60 psi	150 psi	60 psi	125 psi	175 psi	260 / 160 psi	–
3 1/2"	–	–	–	–	–	–	–	–
4"	70 psi	60 psi	125 psi	50 psi	125 psi	175 psi	300 psi	–
4 1/2"	–	–	–	–	–	–	–	–
5"	40 psi	–	–	–	–	175 psi	–	–
5 1/2"	–	–	–	–	–	–	–	–
6"	50 psi	40 psi	115 psi	–	–	175 psi	290 psi	290 psi
7"	45 psi	–	–	–	–	–	–	230 psi
8"	35 psi	40 psi	70 psi	–	–	145 psi	–	200 psi
10"	30 psi	–	65 psi	–	–	–	–	200 psi
12"	30 psi	–	–	–	–	–	–	155 psi
16"	30 psi	–	–	–	–	–	–	–
STOCK LENGTHS	100, 300	50,300	100, 300	50	50	50, 100, 200	50, 100, 200	660

Because we continually examine ways to improve our products, we reserve the right to alter specifications or discontinue products without prior notice.

CATEGORY	PVC/Nitrile	Polyurethane (TPU)				Polyester/Rubber		
CATALOG PAGE	14	19	17	18	23	24	24	25
PRODUCT	OROFLEX® Bandama	OROFLEX® Terrain	OROFLEX® Aqua	OROFLEX® Drag	OROFLEX® Oil	Single Jacket Hose	Double Jacket Hose	Double Jacket Assemblies
MATERIAL	PVC / Nitrile	Polyurethane	Polyurethane	Polyurethane	Polyurethane	Polyester / Rubber	Polyester /Rubber	Polyester /Rubber
COLOR	Black	Black	Blue	Orange	Army Green Or Tan	White	White	White
APPLICATION	Irrigation	Water Transfer Fracking	Potable Water Bypass	Manure Drag	Hydrocarbs to MIL C-370J	Industrial Construction	Industrial Construction	Industrial Construction
3/4"	-	-	-	-	-	-	-	-
1"	-	-	240 psi	-	-	-	-	-
1 1/4"	-	-	-	-	-	-	-	-
1 1/2"	-	-	300 psi	-	-	150 psi	200 psi	200 psi
2"	-	-	240 psi	-	150 psi	150 psi	-	-
2 1/2"	290 psi	-	240 psi	-	150 psi	150 psi	200 psi	200 psi
3"	260 psi	-	240 psi	-	150 psi	150 psi	-	-
3 1/2"	230 psi	-	-	-	150 psi	-	-	-
4"	200 psi	320 psi	240 psi	245 psi	150 psi	150 psi	-	-
4 1/2"	175 psi	-	-	200 psi	-	-	-	-
5"	175 psi	-	-	200 psi	-	-	-	-
5 1/2"	-	-	-	175 psi	-	-	-	-
6"	175 psi	320 psi	240 psi	175 psi	150 psi	-	-	-
7"	-	-	-	-	-	-	-	-
8"	-	200 psi	200 psi	-	-	-	-	-
10"	-	200 psi	200 psi	-	-	-	-	-
12"	-	175/200 psi	175/200 psi	-	-	-	-	-
16"	-	175 psi	-	-	-	-	-	-
STOCK LENGTHS	660	660	200, 660	660	200, 660	50, 100	100	50

Because we continually examine ways to improve our products, we reserve the right to alter specifications or discontinue products without prior notice.

## LAYFLAT HOSES

Ironsides® Premium Duty PVC Water Discharge Hose.....	7
Layflat Hose Assemblies .....	8 – 9
Mill Discharge Hoses Single Jacket & Double Jacket “Contractor Grade” .....	24
Mill Discharge Assemblies Double Jacket “Contractor Grade” .....	25
OROFLEX® 10 PVC / Nitrile Rubber Discharge Hose .....	12
OROFLEX® 10 PVC / Nitrile Rubber Discharge Hose Assemblies .....	13
OROFLEX® 20 BLACK Heavy Duty PVC / Nitrile Rubber Discharge Hose .....	16
OROFLEX® 20 YELLOW Heavy Duty PVC / Nitrile Air & Discharge Hose.....	15
OROFLEX® AQUA Polyurethane Potable Water Discharge Hose .....	17
OROFLEX® BANDAMA PVC / Nitrile Rubber Irrigation Hose .....	14
OROFLEX® DRAG Polyurethane Manure Drag Hose.....	18
OROFLEX® OIL Polyurethane Oil Transfer Hose.....	23
OROFLEX® TERRAIN™ Polyurethane Discharge Hose, Assemblies, Couplings.....	19 – 21
Vinylflow® Premium PVC Drip Irrigation and Water Discharge Hose .....	6
Vinylflow® EZ-Lite™ General Purpose PVC Water Discharge Hose .....	5

## COUPLINGS

### *EZ-Seal™ Leak Resistant Aluminum Couplings*

Part C Coupler x Hose Shank .....	10
Part E Male Adapter x Hose Shank.....	10
Pin Lug Hose Shank Couplings - Female Ends .....	11
Pin Lug Hose Shank Couplings - Male Ends .....	11

## TECHNICAL INFORMATION

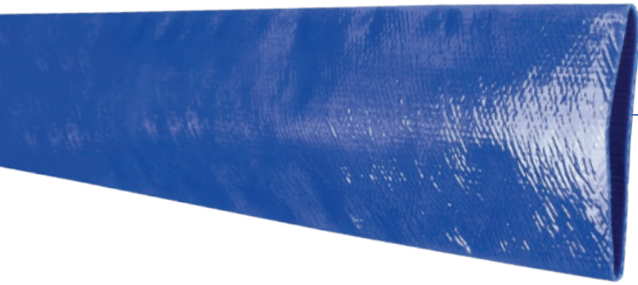
Cautionary Statement & Limited Warranty .....	Back Cover
Chemical Resistance.....	31 – 37
Layflat Hose Product Selection Chart .....	2 – 3
Oroflex Terrain 16" vs. 12" .....	21
Technical Information .....	26 – 30

### LAYFLAT HOSES, COUPLINGS AND ACCESSORIES BY SERIES/PART NUMBER

Series/Part	Page	Series/Part	Page	Series/Part	Page
ABF-LF	11	GEG-BUNA	22	OFDG	18
ABM-LF	11	IS	7	OFOIL	23
AL-CLF	10	LF	8	OFTR	19
AL-ELF	10	LFR	9	OFTRC	20, 21
AL-LDHC	22	OF10	12	OFTRCH	20, 21
BD	14	OF10ASL	13	SJMD	24
DJ	25	OF20B	16	VF	6
DJMD	24	OF20Y	15	VFL	5
GEC-B	22	OFAQ	17		

The trademarks contained in this publication are trademarks of Kuriyama of America, Inc.

Because we continually examine ways to improve our products, we reserve the right to alter specifications or discontinue products without prior notice.



## Vinylflow® EZ-Lite™ VFL Series

### General Purpose PVC Water Discharge Hose

#### GENERAL APPLICATIONS

- Agriculture
- Construction
- Equipment rental

#### CONSTRUCTION

Spiral homogeneous PVC construction is ideal for construction and agriculture applications, and provides for minimal elongation.

#### SERVICE TEMPERATURE RANGE

-10°F (-12°C) to +140°F (+60°C)

View Up To Date Info



◀ SCAN OR VISIT  
[KOA.link/  
VFL](https://koya.link/VFL)

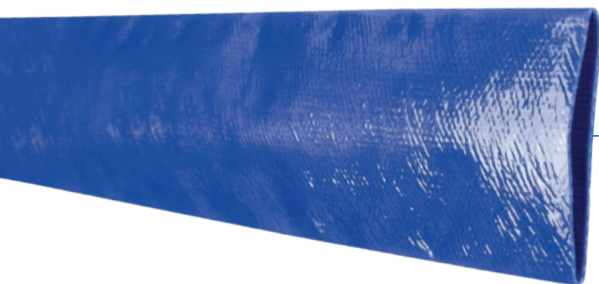
#### FEATURES AND ADVANTAGES

- **Durable PVC Material** – Provides good abrasion, chemical and UV resistance.
- **“EZ” Design** – An easy to handle, lightweight hose for general purpose applications.
- **Smooth PVC Tube** – Provides low friction loss.
- **PVC Cores** – Hoses coiled around durable PVC cores providing for easy unwinding.
- **Compact Design** – Flat hose design rolls up into tight coils for easy storage and transport, takes up less space than other hoses.

Series Number	Size		Hose ID		Wall Thickness (in)	Working Pressure (psi) at 68°F	Burst Pressure (psi) at 68°F	Coil Length (ft)	Weight (lbs/ft)
	(in)	(mm)	(in)	(mm)					
VFL075	3/4	19.1	0.760	19.3	0.054	100	300	300	0.08
VFL100	1	25.4	1.024	26.0	0.051	85	255	300	0.10
VFL125	1 1/4	31.8	1.299	33.0	0.051	85	255	300	0.12
VFL150	1 1/2	38.1	1.614	41.0	0.045	65	195	300	0.14
VFL200	2	50.8	2.087	53.0	0.048	65	195	300/50	0.16
VFL300	3	76.2	3.071	78.0	0.055	60	180	300/50	0.30
VFL400	4	101.6	4.094	104.0	0.056	60	180	300	0.44
VFL600	6	152.4	6.102	155.0	0.061	40	120	300	0.70
VFL800	8	203.2	8.189	208.0	0.073	40	120	300	1.04

**NOTE:** Longer lengths available by special order.

Because we continually examine ways to improve our products, we reserve the right to alter specifications or discontinue products without prior notice.



## Vinylflow® VF Series

Premium PVC Drip Irrigation & Water Discharge Hose

### GENERAL APPLICATIONS

- Agriculture
- Construction
- Drip irrigation
- Industrial

### CONSTRUCTION

Spiral homogeneous PVC construction is ideal for irrigation and agriculture applications, and provides for minimal elongation.

### SERVICE TEMPERATURE RANGE

-10°F (-12°C) to +140°F (+60°C)

View Up To Date Info



◀ SCAN OR VISIT  
[KOA.link/  
VF](https://koya.link/VF)

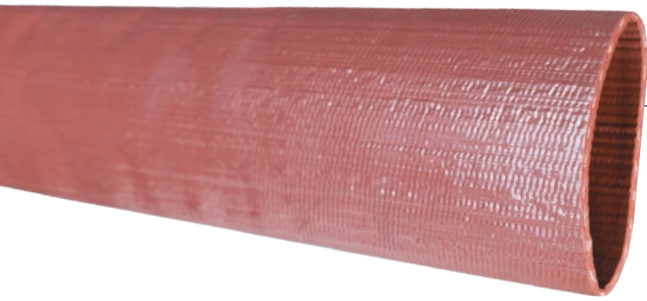
### FEATURES AND ADVANTAGES:

- **Durable PVC Material** – Provides good abrasion, chemical and UV resistance.
- **Drip Irrigation** – Hose designed to be punched easily without tearing. Ideal for drip irrigation applications.
- **Smooth PVC Tube** – Provides low friction loss.
- **PVC Cores** – Hoses coiled around durable PVC cores providing for easy unwinding.
- **Compact Design** – Flat hose design rolls up into tight coils for easy storage and transport, takes up less space than other hoses.

Series Number	Size		Hose ID		Wall Thickness (in)	Working Pressure (psi) at 68°F	Burst Pressure (psi) at 68°F	Coil Length (ft)	Weight (lbs/ft)
	(in)	(mm)	(in)	(mm)					
VF150	1 1/2	38.1	1.614	41.0	0.067	80	240	300	0.16
VF200	2	50.8	2.090	53.1	0.067	80	240	300	0.23
VF250	2 1/2	63.5	2.598	66.0	0.079	80	240	300	0.29
VF300	3	76.2	3.130	79.5	0.079	70	210	300	0.39
VF400	4	101.6	4.134	105.0	0.083	70	210	300	0.52
VF500	5	127.0	5.039	128.0	0.087	40	120	300	0.68
VF600	6	152.4	6.181	157.0	0.087	50	150	300	0.86
VF800	8	203.2	8.169	207.5	0.106	45	135	300/100	1.30
VF1000	10	254.0	10.118	257.0	0.118	35	105	100	1.81
VF1200	12	304.8	12.126	308.0	0.118	30	90	100	1.95
VF1400	14	355.6	14.134	359.0	0.118	30	90	100	2.62
VF1600	16	406.4	16.142	410.0	0.118	30	90	100	3.10

**NOTE:** Longer lengths available by special order.

Because we continually examine ways to improve our products, we reserve the right to alter specifications or discontinue products without prior notice.



# **Ironsides® IS Series**

## Premium Heavy Duty PVC Water Discharge Hose

### GENERAL APPLICATIONS

- Agriculture
- Construction
- Industrial
- Mining
- Quarry

### CONSTRUCTION

Spiral homogeneous PVC construction is ideal for agriculture and mining applications, and provides for minimal elongation.

### SERVICE TEMPERATURE RANGE

-10°F (-12°C) to +140°F (+60°C)

View Up To Date Info



◀ SCAN OR VISIT  
[KOA.link/IS](https://KOA.link/IS)



### FEATURES AND ADVANTAGES:

- **Durable PVC Material** – Provides good abrasion, chemical and UV resistance.
- **Premium Heavy Duty Construction** – Our most durable PVC layflat hose. Designed for applications requiring higher working pressures.
- **MSHA Accepted** – Hose accepted by United States Dept. of Labor’s Mine Safety and Health Administration as having met the Interim Fire Criteria Acceptance of Products Taken Into Underground Mines, acceptance no. IC-218/3.
- **UV Resistant** – Hose resists damage that can result from exposure to UV light, allowing for prolonged outdoor use.
- **Smooth PVC Tube** – Provides low friction loss.
- **PVC Cores** – Hoses coiled around durable PVC cores providing for easy unwinding.
- **Compact Design** – Flat hose design rolls up into tight coils for easy storage and transport, takes up less space than other hoses.

Series Number	Size		Hose ID		Wall Thickness (in)	Working Pressure (psi) at 68°F	Burst Pressure (psi) at 68°F	Coil Length (ft)	Weight (lbs/ft)
	(in)	(mm)	(in)	(mm)					
IS150	1 1/2	38.1	1.610	40.9	0.087	150	450	300	0.23
IS200	2	50.8	2.090	53.1	0.091	150	450	300	0.32
IS250	2 1/2	63.5	2.579	65.5	0.095	150	450	300	0.41
IS300	3	76.2	3.090	78.5	0.098	150	450	300	0.52
IS400	4	101.6	4.098	104.1	0.110	125	375	300	0.76
IS600	6	152.4	6.161	156.5	0.118	115	345	300	1.21
IS800	8	203.2	8.150	207.0	0.122	70	210	300/100	1.62
IS1000	10	254.0	10.120	257.0	0.130	65	195	100	1.95

**NOTE:** Longer lengths available by special order.

Because we continually examine ways to improve our products, we reserve the right to alter specifications or discontinue products without prior notice.



LF---APLX50



LF---ACEX50

## LF PVC Hose Assemblies

### GENERAL APPLICATIONS

- Agriculture
- Construction
- Contractor
- Industrial
- Rental

### CONSTRUCTION

Spiral homogeneous PVC construction is ideal for irrigation and agriculture applications, and provides for minimal elongation.

### SERVICE TEMPERATURE RANGE

-10°F (-12°C) to +140°F (+60°C)

### FEATURES AND ADVANTAGES

- Smooth Tube – Provides low friction loss.
- Packaging – Individual carton.
- Storage – Hose coils flat for easy storage.

View Up To Date Info



◀ SCAN OR VISIT

[KOA.link/  
LF-Assemblies](https://KOA.link/LF-Assemblies)

Part Number	Size (in)	Size (mm)	Wall Thickness (in)	Working Pressure (psi) at 68°F	Coil Length (ft)	Weight (ea/lbs)
LF150APLX50	1 1/2	38.1	0.059	70	50	9.00
LF200APLX50	2	50.8	0.063	65	50	13.50
LF300APLX50	3	76.2	0.067	60	50	21.50
LF400APLX50	4	101.6	0.067	50	50	30.00

**Hose Ends:** Aluminum pin lug couplings male and female

Part Number	Size (in)	Size (mm)	Wall Thickness (in)	Working Pressure (psi) at 68°F	Coil Length (ft)	Weight (ea/lbs)
LF150ACEX50	1 1/2	38.1	0.059	70	50	9.50
LF200ACEX50	2	50.8	0.063	65	50	13.60
LF300ACEX50	3	76.2	0.067	60	50	22.00
LF400ACEX50	4	101.6	0.067	50	50	31.50

**Hose Ends:** Aluminum camlocks male x female

Because we continually examine ways to improve our products, we reserve the right to alter specifications or discontinue products without prior notice.



## LFR PVC Hose Assemblies

### GENERAL APPLICATIONS

- Agriculture
- Construction
- Contractor
- Industrial
- Rental

### CONSTRUCTION

Spiral homogeneous PVC construction is ideal for irrigation and agriculture applications, and provides for minimal elongation.

### SERVICE TEMPERATURE RANGE

-10°F (-12°C) to +140°F (+60°C)

### FEATURES AND ADVANTAGES

- Smooth Tube – Provides low friction loss.
- Packaging – Individual carton.
- Storage – Hose coils flat for easy storage.

View Up To Date Info



◀ SCAN OR VISIT  
[KOA.link/  
LFR-Assemblies](https://koya.link/LFR-Assemblies)

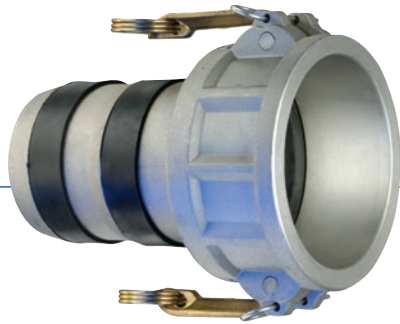
Part Number	Size (in)	Size (mm)	Wall Thickness (in)	Working Pressure (psi) at 68°F	Coil Length (ft)	Weight (ea/lbs)
LFR150APLX50	1 1/2	38.1	0.079	140	50	13.50
LFR200APLX50	2	50.8	0.079	128	50	18.00
LFR300APLX50	3	76.2	0.098	125	50	28.00
LFR400APLX50	4	101.6	0.110	125	50	40.50

**Hose Ends:** Aluminum pin lug couplings male and female

Part Number	Size (in)	Size (mm)	Wall Thickness (in)	Working Pressure (psi) at 68°F	Coil Length (ft)	Weight (ea/lbs)
LFR150ACEX50	1 1/2	38.1	0.079	140	50	14.00
LFR200ACEX50	2	50.8	0.079	128	50	18.50
LFR300ACEX50	3	76.2	0.098	125	50	28.50
LFR400ACEX50	4	101.6	0.110	125	50	41.00

**Hose Ends:** Aluminum camlocks male x female

Because we continually examine ways to improve our products, we reserve the right to alter specifications or discontinue products without prior notice.



## AL-CLF Series (Aluminum Part C)

### Female Coupler X Hose Shank

### **EZ-Seal™ Design**

#### GENERAL APPLICATIONS

- Agriculture
- Chemicals
- Construction
- Material handling
- Petroleum

#### CONSTRUCTION

Aluminum; ASTM B85 Grade 383

#### FEATURES AND ADVANTAGES:

- Rubber seals – Help prevent leakage.
- Interchangeability – Part C & E conform to Mil Spec A-A-59326.
- Versatile – Suitable for use with other PVC and Rubber Hoses.

View Up To Date Info



◀ SCAN OR VISIT  
[KOA.link/  
AL-CLF](http://KOA.link/AL-CLF)

Part Number	Size (in)	PSI Rating at 70°F	ASTM Specification	Weight Each (lbs)	Standard Carton
AL-CLF150	1 1/2	250	B85 Grade 383	0.77	30
AL-CLF200	2	250	B85 Grade 383	0.98	40
AL-CLF300	3	150	B85 Grade 383	1.98	15
AL-CLF400	4	150	B85 Grade 383	2.87	15
AL-CLF600	6	75	B85 Grade 383	5.65	6



## AL-ELF Series (Aluminum Part E)

### Male Coupler X Hose Shank

### **EZ-Seal™ Design**

#### GENERAL APPLICATIONS

- Agriculture
- Chemicals
- Construction
- Material handling
- Petroleum

#### CONSTRUCTION

Aluminum; ASTM B85 Grade 383

#### FEATURES AND ADVANTAGES:

- Rubber seals – Help prevent leakage.
- Interchangeability – Part C & E conform to Mil Spec A-A-59326.
- Versatile – Suitable for use with other PVC and Rubber Hoses.

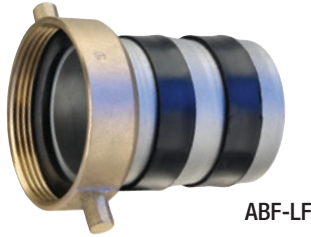
View Up To Date Info



◀ SCAN OR VISIT  
[KOA.link/  
AL-ELF](http://KOA.link/AL-ELF)

Part Number	Size (in)	PSI Rating at 70°F	ASTM Specification	Weight Each (lbs)	Standard Carton
AL-ELF150	1 1/2	250	B85 Grade 383	0.44	40
AL-ELF200	2	250	B85 Grade 383	0.64	50
AL-ELF300	3	150	B85 Grade 383	1.38	18
AL-ELF400	4	150	B85 Grade 383	2.51	20
AL-ELF600	6	75	B85 Grade 383	4.83	6

Because we continually examine ways to improve our products, we reserve the right to alter specifications or discontinue products without prior notice.



ABF-LF



ABM-LF

## ABF-LF Series

Aluminum Shank with Female Brass Swivel Nut

**EZ-Seal™ Design**

## ABM-LF Series

Aluminum Shank with Male Threads

**EZ-Seal™ Design**

View Up To Date Info



◀ SCAN OR VISIT  
[KOA.link/ABxLF](http://KOA.link/ABxLF)

### FEATURES AND ADVANTAGES

- Versatile threaded hose connectors designed for suction and discharge applications.
- EZ-Seal™ fittings come with rubber seals on the shanks to help prevent leakage.
- Male ends supplied with NPSM threads (National Pipe Straight Mechanical).
- Cylindrical studs or “pins” positioned on the outside rim of the coupling allowing the use of a spanner wrench to tighten the coupling.

### MATERIAL SPECIFICATIONS

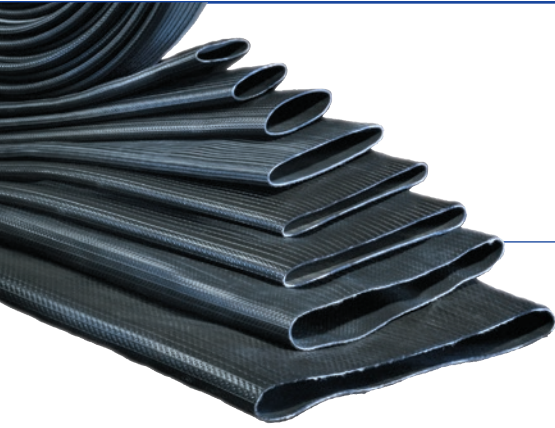
- ASTM B108-92 356 aluminum alloy.
- ASTM B283 Grade 37700 brass alloy.

*Note: To insure proper sealing attach band clamps directly over rubber seals during assembly procedure*

Part Number	Size (in)	PSI Rating at 70°F	Weight Each (lbs)	Standard Carton
ABF-LF150	1 1/2	75	0.37	150
ABF-LF200	2	75	0.58	80
ABF-LF300	3	50	1.16	24
ABF-LF400	4	50	2.01	20

Part Number	Size (in)	PSI Rating at 70°F	Weight Each (lbs)	Standard Carton
ABM-LF150	1 1/2	75	0.22	150
ABM-LF200	2	75	0.40	80
ABM-LF300	3	50	1.04	24
ABM-LF400	4	50	1.48	20

Because we continually examine ways to improve our products, we reserve the right to alter specifications or discontinue products without prior notice.



# OROFLEX® 10

## OF10 Series

### PVC/Nitrile Rubber Discharge Hose

#### GENERAL APPLICATIONS

- Agriculture
- Cable covering
- Dewatering
- Drainage
- Floatation booms
- Industrial washdown
- Irrigation
- Limited oil and chemical applications
- Pump discharge
- Watering

#### CONSTRUCTION

Black PVC/Nitrile hose using an extruded through-the-weave process with circular woven high tenacity polyester reinforcement

#### SERVICE TEMPERATURE RANGE

-22°F (-30°C) to +176°F (+80°C)

View Up To Date Info



◀ SCAN OR VISIT  
[KOA.link/OF10](https://KOA.link/OF10)



#### FEATURES AND ADVANTAGES

- **Proprietary PVC/Nitrile Material** – Specially developed PVC/Nitrile material provides superior abrasion, UV, chemical and oil resistance compared to PVC hoses.
- **Unique Woven Construction** – Specially designed weave pattern provides resistance to snaking, kinking, stretching and twisting.
- **Compact Design** – Flat hose design rolls up into tight coils for easy storage and transport, takes up less space than other hoses.

Series Number	Size (in)	Size (mm)	Hose ID (in)	Hose ID (mm)	Wall Thickness (in)	Working Pressure (psi) at 68°F	Burst Pressure (psi) at 68°F	Coil Length (ft)	Tensile Strength (lbs)	Weight (lbs/ft)
OF10-150	1 1/2	38.1	1.520	38.6	0.075	200	600	200	6,500	0.20
OF10-200	2	50.8	2.110	53.6	0.075	200	600	200	8,250	0.27
OF10-250	2 1/2	63.5	2.590	65.8	0.087	200	600	200	11,300	0.38
OF10-300	3	76.2	3.181	80.8	0.091	175	460	200/100	11,750	0.48
OF10-400	4	101.6	4.200	106.7	0.094	175	435	660/200/100/50	17,400	0.70
OF10-500	5	127.0	5.020	127.5	0.106	175	435	200	20,650	0.94
OF10-600	6	152.4	6.098	154.9	0.118	175	435	660/200/100/50	36,000	1.08
OF10-800	8	203.2	8.051	204.5	0.134	145	360	100/50	51,950	1.85

Because we continually examine ways to improve our products, we reserve the right to alter specifications or discontinue products without prior notice.



# OROFLEX® 10 OF10ASL Series

PVC/Nitrile Rubber Discharge Hose Assemblies

### GENERAL APPLICATIONS

- Agriculture
- Cable covering
- Dewatering
- Drainage
- Flootation booms
- Industrial washdown
- Irrigation
- Limited oil and chemical applications
- Pump discharge
- Watering

View Up To Date Info



◀ SCAN OR VISIT  
[KOA.link/  
OF10ASL](https://KOA.link/OF10ASL)



### CONSTRUCTION

Black PVC/Nitrile hose using an extruded through-the-weave process with circular woven high tenacity polyester reinforcement.

### SERVICE TEMPERATURE RANGE

-22°F (-30°C) to +176°F (+80°C)

### FEATURES AND ADVANTAGES

- **Factory Tested** – 100% pressure tested with factory certificate.
- **Complete Assembly** – Includes crimped on Sphere Lock™ male and female type B ball and socket couplings.
- **Proprietary PVC/Nitrile Material** – Specially developed PVC/Nitrile material provides superior abrasion, UV, chemical and oil resistance compared to PVC hoses.
- **Unique Woven Construction** – Specially designed weave pattern provides resistance to snaking, kinking, stretching and twisting.



**FEATURING  
SPHERE LOCK™  
COUPLINGS**

Part Number	Size (in)	Size (mm)	Wall Thickness (in)	Working Pressure (psi) at 68°F	Burst Pressure (psi) at 68°F	Coil Length (ft)	Tensile Strength (lbs)	Weight (lbs/pc)
OF10ASL400X50	4	101.6	0.094	175	435	50	17,400	49.0
OF10ASL600X50	6	152.4	0.118	175	435	50	36,000	77.0
OF10ASL800X50	8	203.2	0.134	145	360	50	51,950	129.0

Because we continually examine ways to improve our products, we reserve the right to alter specifications or discontinue products without prior notice.



# OROFLEX® BANDAMA

## BD Series

PVC/Nitrile Rubber Irrigation Hose

### GENERAL APPLICATIONS

- Flexible pipeline
- Heavy duty dredge discharge
- High abrasion resistant applications
- Irrigation supply lines
- Slurry, sludge, liquid manure pumping
- Traveling irrigators

### CONSTRUCTION

Black PVC/Nitrile hose using an extruded through-the-weave process with circular woven high tenacity polyester reinforcement

### SERVICE TEMPERATURE RANGE

-20°F (-29°C) to +176°F (+80°C)

View Up To Date Info



◀ SCAN OR VISIT  
[KOA.link/BD](https://koya.link/BD)



### FEATURES AND ADVANTAGES

- **Proprietary PVC/Nitrile Material** – Specially developed PVC/Nitrile material provides superior abrasion, UV, chemical and oil resistance compared to PVC hoses.
- **Superior Snaking Resistance!** – Specially designed to virtually eliminate instances of hose snaking, making the hose ideal for use on traveling irrigators.
- **Unique Woven Construction** – Specially designed weave pattern provides resistance to kinking, stretching and twisting.
- **Longer Lengths** – Manufactured in special 660 foot lengths to reduce possible leaking points.
- **Compact Design** – Flat hose design rolls up into tight coils for easy storage and transport, takes up less space than other hoses.

Series Number	Size		Hose ID		Wall Thickness (in)	Working Pressure (psi) at 68°F	Burst Pressure (psi) at 68°F	Coil Length (ft)	Tensile Strength (lbs)	Weight (lbs/ft)
	(in)	(mm)	(in)	(mm)						
+BD250	2 1/2	63.5	2.598	66.0	0.120	290	725	660	11,728	0.57
+BD300	3	76.2	3.051	77.5	0.120	260	650	660	18,475	0.67
+BD350	3 1/2	88.9	3.543	90.0	0.130	230	580	660	20,503	0.77
BD400	4	101.6	4.067	103.3	0.130	200	505	660	22,046	0.94
BD450	4 1/2	114.3	4.626	117.5	0.130	175	435	660	25,353	1.08
+BD500	5	127.0	5.020	127.5	0.140	175	435	660	27,161	1.21
+BD600	6	152.4	6.043	153.5	0.140	175	435	660	33,069	1.41

+ **NOTE:** This is a non-stock product. Minimum order requirements may apply. Contact Kuriyama customer service for details.

Because we continually examine ways to improve our products, we reserve the right to alter specifications or discontinue products without prior notice.



# OROFLEX® 20 YELLOW

## OF20Y Series

### Heavy Duty PVC/Nitrile Air & Discharge Hose

#### GENERAL APPLICATIONS

- Agriculture
- Air compressors
- Bulk powder discharge (excluding cement)
- Cable covering
- Dewatering
- Drainage
- Flotation booms
- High pressure liquid pumping
- Industrial washdown
- Irrigation
- Limited oil and chemical applications
- Watering

#### CONSTRUCTION

Yellow PVC/Nitrile hose using an extruded through-the-weave process with circular woven high tenacity polyester reinforcement

#### SERVICE TEMPERATURE RANGE

-22°F (-30°C) to +176°F (+80°C)

View Up To Date Info



◀ SCAN OR VISIT  
[KOA.link/OF20Y](https://KOA.link/OF20Y)

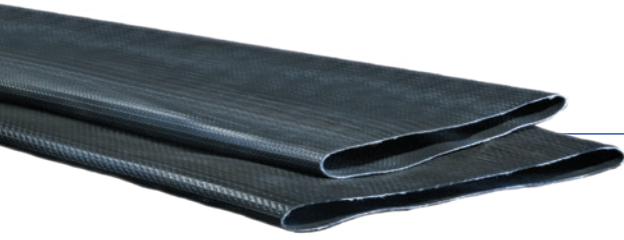


#### FEATURES AND ADVANTAGES

- **Proprietary PVC/Nitrile Material** – Specially developed PVC/Nitrile material provides superior abrasion, UV, chemical and oil resistance compared to PVC hoses.
- **Unique Woven Construction** – Specially designed weave pattern provides resistance to snaking, kinking, stretching and twisting.
- **Compact Design** – Flat hose design rolls up into tight coils for easy storage and transport, takes up less space than other hoses.

Series Number	Size		Hose ID		Wall Thickness (in)	Working Pressure (psi) at 68°F		Burst Pressure (psi) at 68°F	Coil Length (ft)	Tensile Strength (lbs)	Weight (lbs/ft)
	(in)	(mm)	(in)	(mm)		(liquid)	(air)				
OF20Y-075	3/4	19.1	0.866	22.0	0.080	480	360	1450	200/50	3,300	0.13
OF20Y-100	1	25.4	1.075	27.3	0.080	550	415	1660	200/50	4,150	0.17
OF20Y-150	1 1/2	38.1	1.555	39.5	0.110	305	225	910	200	6,600	0.30
OF20Y-200	2	50.8	2.106	53.5	0.120	305	225	910	200	8,250	0.43
OF20Y-250	2 1/2	63.5	2.590	65.8	0.120	300	185	750	200	13,200	0.47
OF20Y-300	3	76.2	3.031	77.0	0.120	260	160	650	200/100	18,750	0.61
OF20Y-400	4	101.6	4.035	102.5	0.120	300	–	750	200	28,650	0.84
OF20Y-600	6	152.4	6.063	154.0	0.160	290	–	725	100	51,600	1.68

Because we continually examine ways to improve our products, we reserve the right to alter specifications or discontinue products without prior notice.



# OROFLEX® 20 BLACK

## OF20B Series

Heavy Duty PVC/Nitrile Rubber Discharge Hose

### GENERAL APPLICATIONS

- Agriculture
- Contaminated liquids, fertilizers, oils, hydrocarbons
- Dewatering
- Frack solution and fresh water transfer
- Irrigation
- Limited chemical applications
- Liquid manure, sludge and slurry transfer
- Mining
- Watering

### CONSTRUCTION

Black PVC/Nitrile hose using an extruded through-the-weave process with circular woven high tenacity polyester reinforcement

### SERVICE TEMPERATURE RANGE

-20°F (-29°C) to +176°F (+80°C)

View Up To Date Info



◀ SCAN OR VISIT  
[KOA.link/OF20B](https://KOA.link/OF20B)



### FEATURES AND ADVANTAGES

- **Proprietary PVC/Nitrile Material** – Specially developed PVC/Nitrile material provides superior abrasion, UV, chemical and oil resistance compared to PVC hoses.
- **Unique Woven Construction** – Specially designed weave pattern provides resistance to snaking, kinking, stretching and twisting.
- **Longer Lengths** – Manufactured in special 660 foot lengths to reduce possible leaking points.
- **Compact Design** – Flat hose design rolls up into tight coils for easy storage and transport, takes up less space than other hoses.

Series Number	Size		Hose ID		Wall Thickness (in)	Working Pressure (psi) at 68°F	Burst Pressure (psi) at 68°F	Coil Length (ft)	Tensile Strength (lbs)	Weight (lbs/ft)
	(in)	(mm)	(in)	(mm)						
OF20B-600	6	152.4	6.063	154.0	0.160	290	725	660/100	51,600	1.68
OF20B-700	7	177.8	7.126	181.0	0.160	230	580	660	66,150	1.88
OF20B-800	8	203.2	8.091	205.5	0.150	200	500	660	77,150	2.22
OF20B-1000	10	254.0	10.059	255.5	0.150	200	500	660/100/50	110,250	2.65
OF20B-1200	12	304.8	12.087	307.0	0.160	155	375	660/100/50	101,400	3.43

Because we continually examine ways to improve our products, we reserve the right to alter specifications or discontinue products without prior notice.



## OROFLEX® AQUA OFAQ Series

### Polyurethane Potable Water Discharge Hose

#### GENERAL APPLICATIONS

- Drinking water transport
- Emergency water supply
- Liquid and powder food transfer
- Potable water to transfer ships/boats
- Sewer and water treatment

#### CONSTRUCTION

Blue NSF-61 polyurethane (TPU) hose using an extruded through-the-weave process with circular woven high tenacity polyester reinforcement

#### SERVICE TEMPERATURE RANGE

-58°F (-50°C) to +122°F (+50°C);  
Intermittent service to +175°F (+79°C)

View Up To Date Info



◀ SCAN OR VISIT

[KOA.link/  
OFAQ](https://KOA.link/OFAQ)



#### FEATURES AND ADVANTAGES

- **Premium Polyurethane (TPU) Material** – Exhibits exceptional resistance to abrasion, allowing for use in applications where severe abrasion is a factor and providing longer service life versus rubber or PVC hoses. Also, exhibits exceptional resistance to oils and petroleum based products.
- **NSF-61 Certified** – Hose is certified under NSF/ANSI 61: Drinking Water System Components.
- **Unique Woven Construction** – Specially designed weave pattern provides resistance to snaking, kinking, stretching and twisting.
- **Longer Lengths** – Available in 200 foot lengths and also longer 660 foot lengths to reduce possible leaking points.
- **Smooth TPU Tube** – Provides low friction loss.
- **Compact Design** – Flat hose design rolls up into tight coils for easy storage and transport, takes up less space than other hoses.

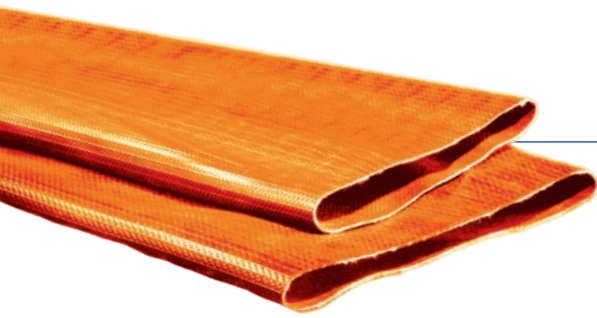
Series Number	Size		Hose ID		Wall Thickness (in)	Working Pressure (psi) at 68°F	Burst Pressure (psi) at 68°F	Coil Length (ft)	Weight (lbs/ft)
	(in)	(mm)	(in)	(mm)					
OFAQ-100	1	25.4	1.004	25.5	0.071	240	725	660, 200	0.11
OFAQ-150	1 1/2	38.1	1.559	39.6	0.079	300	900	660, 200	0.24
OFAQ-200	2	50.8	2.059	52.3	0.075	240	600	660, 200	0.26
OFAQ-250	2 1/2	63.5	2.618	66.5	0.090	240	600	660, 200	0.35
OFAQ-300	3	76.2	3.059	77.7	0.093	240	600	660, 200	0.43
OFAQ-400	4	101.6	4.059	103.1	0.106	240	600	660, 200	0.67
OFAQ-600	6	152.4	6.020	152.9	0.138	240	600	660, 200	1.18
+OFAQ-800	8	203.2	8.100	206.0	0.169	200	600	660	2.22
+OFAQ-1000	10	254.0	10.100	256.0	0.177	200	500	660	2.80
+OFAQ-1200	12	304.8	12.100	307.5	0.185	175	435	660	3.43
+OFAQH-1200	12	304.8	12.100	307.5	0.197	200	500	660	3.55

**+ NOTE:** This is a non-stock product. Minimum order requirements may apply. Contact Kuriyama customer service for details.

**NSF Note:** Only products bearing the NSF mark are certified.

**Recommended Operating PH Range:** 4 to 9 below +86°F (+30°C) and 5 to 9 from +86°F (+30°C) to +122°F (+50°C).

Because we continually examine ways to improve our products, we reserve the right to alter specifications or discontinue products without prior notice.



# OROFLEX® DRAG

## OFDG Series

### Polyurethane Manure Drag Hose

#### GENERAL APPLICATIONS

- Drag and transport lines for slurry/manure injection and spreading
- Irrigation feeding line
- Traveler irrigators

#### CONSTRUCTION

Orange polyurethane (TPU) hose using an extruded through-the-weave process with circular woven high tenacity polyester reinforcement

#### SERVICE TEMPERATURE RANGE

-58°F (-50°C) to +150°F (+65°C);  
Intermittent service to +175°F (+79°C)

View Up To Date Info



◀ SCAN OR VISIT  
[KOA.link/OFDG](https://KOA.link/OFDG)



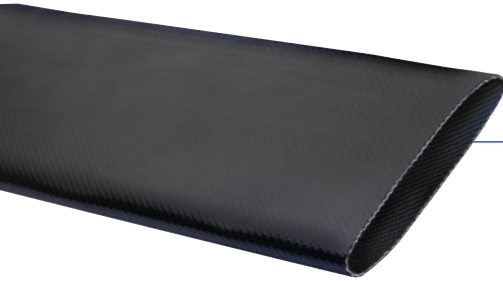
#### FEATURES AND ADVANTAGES

- **Premium Polyurethane (TPU) Material** – Exhibits exceptional resistance to abrasion, allowing for use in applications where severe abrasion is a factor and providing longer service life versus rubber or PVC hoses. Also, exhibits exceptional resistance to oils and petroleum based products.
- **Unique Woven Construction** – Specially designed weave pattern provides resistance to snaking, kinking, stretching and twisting.
- **Longer Lengths** – Manufactured in special 660 foot lengths to reduce possible leaking points.
- **Smooth TPU Tube** – Provides low friction loss.
- **Compact Design** – Flat hose design rolls up into tight coils for easy storage and transport, takes up less space than other hoses.

Series Number	Size		Hose ID		Wall Thickness (in)	Working Pressure (psi) at 68°F	Burst Pressure (psi) at 68°F	Coil Length (ft)	Tensile Strength (lbs)	Weight (lbs/ft)
	(in)	(mm)	(in)	(mm)						
+OFDG-400	4	101.6	4.110	104.4	0.140	245	605	660	28,900	0.87
+OFDG-450	4 1/2	114.3	4.598	116.8	0.140	200	505	660	35,300	0.94
+OFDG-500	5	127.0	5.020	127.5	0.150	200	505	660	39,700	1.14
+OFDG-550	5 1/2	139.7	5.571	141.5	0.150	175	435	660	44,100	1.28
+OFDG-600	6	152.4	6.003	152.5	0.150	175	435	660	55,100	1.38

+ **NOTE:** This is a non-stock product. Minimum order requirements may apply. Contact Kuriyama customer service for details.

Because we continually examine ways to improve our products, we reserve the right to alter specifications or discontinue products without prior notice.



# OROFLEX® TERRAIN™

## OFTR Series

### Polyurethane Discharge Hose

#### GENERAL APPLICATIONS

- Dewatering
- Drinking water transport
- Fluid transfer (see chemical chart)
- Large volume water transfer including fracking
- Manure transfer
- Mining
- Emergency water supply

#### CONSTRUCTION

Black polyurethane (TPU) hose using an extruded through-the-weave process with circular woven high tenacity polyester reinforcement

#### SERVICE TEMPERATURE RANGE

-58°F (-50°C) to +150°F (+65°C);  
Intermittent service to +175°F (+79°C)

View Up To Date Info



◀ SCAN OR VISIT  
[KOA.link/OFTR](https://KOA.link/OFTR)



#### FEATURES AND ADVANTAGES

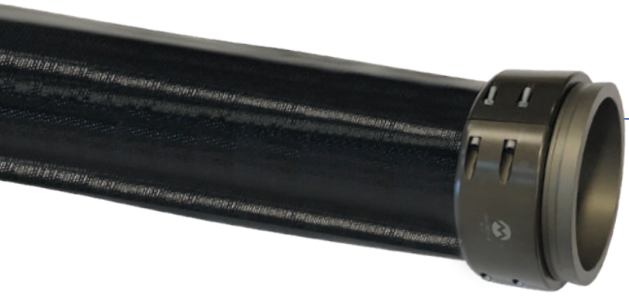
- **Premium Polyurethane (TPU) Material** – Exhibits exceptional resistance to abrasion, allowing for use in applications where severe abrasion is a factor and providing longer service life versus rubber or PVC hoses. Also, exhibits exceptional resistance to oils and petroleum based products.
- **Unique Woven Construction** – Specially designed weave pattern provides resistance to snaking, kinking, stretching and twisting.
- **Longer Lengths** – Manufactured in special 660 foot lengths to reduce possible leaking points.
- **Smooth TPU Tube** – Provides low friction loss.
- **Compact Design** – Flat hose design rolls up into tight coils for easy storage and transport, takes up less space than other hoses.
- **Supreme UV and Ozone Resistance** – For extreme UV and ozone conditions.
- **Cost Efficient** – Savings for 16" versus using 2 x 12" lines. *See page 21 for details.*

Series Number	Size		Hose ID		Wall Thickness	Working Pressure	Burst Pressure	Coil Length	Tensile Strength	Weight
	(in)	(mm)	(in)	(mm)	(in)	(psi) at 68°F	(psi) at 68°F	(ft)	(lbs)	(lbs/ft)
+OFTR-400	4	101.6	4.008	101.8	0.140	320	800	660	26,450	0.90
+OFTR-600	6	152.4	6.000	152.4	0.180	320	800	660	63,950	1.66
+OFTR-800	8	203.2	8.100	206.0	0.165	200	600	660	77,200	2.22
+OFTR-1000	10	254.0	10.100	256.0	0.169	200	500	660	99,200	2.80
+OFTR-1200	12	304.8	12.106	307.5	0.185	175	435	660	121,300	3.43
+OFTRH-1200	12	304.8	12.106	307.5	0.185	200	500	660	154,300	3.55
+OFTRH-1600	16	406.4	16.083	408.5	0.185	175	435	660	176,400	5.11

**NOTE:** NSF/ANSI/Can Standard 61 – Hose can be specially manufactured and certified on request. Contact Kuriyama customer service for details.

**+ NOTE:** This is a non-stock product. Minimum order requirements may apply. Contact Kuriyama customer service for details.

Because we continually examine ways to improve our products, we reserve the right to alter specifications or discontinue products without prior notice.



## OROFLEX® TERRAIN™ ASSEMBLIES

### OFTRC Series

#### Polyurethane Discharge Hose Assemblies

##### GENERAL APPLICATIONS

- Transfer of freshwater or frackwater

##### CONSTRUCTION

Black polyurethane (TPU) hose using an extruded through-the-weave process with circular woven high tenacity polyester reinforcement

##### SERVICE TEMPERATURE RANGE

-58°F (-50°C) to +150°F (+65°C);  
Intermittent service to +175°F (+79°C)



View Up To Date Info



◀ SCAN OR VISIT  
[KOA.link/OFTRC](https://KOA.link/OFTRC)



#### FEATURES AND ADVANTAGES

- **Premium Polyurethane (TPU) Material** – Exhibits exceptional resistance to abrasion, allowing for use in applications where severe abrasion is a factor and providing longer service life versus rubber or PVC hoses. Also, exhibits exceptional resistance to oils and petroleum based products.
- **Couplings Included** – Durable and lightweight oilfield hose couplings (AL-LDHC Series) on hose ends.
- **Unique Woven Construction** – Specially designed weave pattern provides resistance to kinking, stretching and twisting. Superior snaking resistance!
- **Longer Lengths** – Manufactured in special 660 foot lengths to reduce possible leaking points.
- **Smooth TPU Tube** – Provides low friction loss.
- **Compact Design** – Flat hose design rolls up into tight coils for easy storage and transport, takes up less space than other hoses.
- **Factory Tested** – 100% Hydraulic tested with factory certificate.
- **Supreme UV and Ozone Resistance** – For extreme UV and ozone conditions.
- **Cost Efficient** – Savings for 16" versus using 2 x 12" lines. See page 21 for details.

Part Number	Size (in)	Size (mm)	Wall Thickness (in)	Working Pressure (psi) at 68°F	Burst Pressure (psi) at 68°F	Coil Length (ft)	Tensile Strength (lbs)	Weight (lbs/ft)
+OFTRC-1000X660	10	254.0	0.169	200	500	660	100,310	2.82
+OFTRC-1200X660	12	304.8	0.185	175	435	660	121,254	3.52
+OFTRCH-1200X660	12	304.8	0.185	200	500	660	154,300	3.63
+OFTRCH-1600X660	16	406.4	0.185	175	435	660	176,400	5.11

+ NOTE: This is a non-stock product. Minimum order requirements may apply. Contact Kuriyama customer service for details.

Because we continually examine ways to improve our products, we reserve the right to alter specifications or discontinue products without prior notice.



**Hydraulic Performance**

Diameter	bpm	Friction Loss*				
		psi/mile	psi/3miles	psi/5miles	psi/7miles	psi/10miles
12"	100	58	174	-	-	-
14"	100	28	83	138	193	-
16"	100	15	44	73	102	145

Diameter	bpm	Friction Loss*			
		psi/mile	psi/3miles	psi/5miles	psi/6miles
12"	150	131	392	-	-
14"	150	58	174	290	-
16"	150	29	87	145	174

Diameter	bpm	Friction Loss*		
		psi/mile	psi/3miles	psi/4miles
12"	175	-	-	-
14"	175	81	244	-
16"	175	41	123	164

Diameter	bpm	Friction Loss*	
		psi/mile	psi/3miles
12"	200	-	-
14"	200	105	315
16"	200	54	161

	Satisfactory
	Not advisable. Velocity over 12.5 ft/s
	Not advisable. Velocity over 15 ft/s or maximum working pressure exceeded

*\*Friction loss calculated for straight lines of 660' assembled with grooved-end re-attachable fittings with Victaulic assembly. Fresh water at 20°C.*

**CONCLUSIONS**

- 1 x 16" line can replace 2 x 12" lines to cover the same distance & flow: 200bpm vs 100bpm @ 3 miles
- A 16" line can bring almost 50% more water than a 12" line for twice the distance: 150bpm @ 6miles vs 100bpm @ 3miles
- A 16" line can cover twice the distance with the same flow than a 14" line: 6 miles vs 3miles@150bpm
- A 16" line can move 30% more water than a 14" line for the same distance: 200bpm vs 150bpm @ 3miles

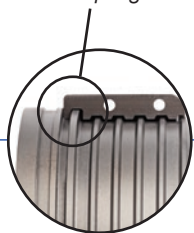
**ADVANTAGES OF A 16" LINE VS A 12" LINE**

- Less Manpower & Lower Operation Costs
- Lower Material Costs
- Less Time & Space Required for Deployment & Retrieval
- Lower Eco Footprint & Lower Accident Rate
- 100% pumping time reduction (50% compared to a 14" line)
- Less Booster Pumps Needed (if any)

Because we continually examine ways to improve our products, we reserve the right to alter specifications or discontinue products without prior notice.



Don't risk a leak!  
Unique Locking Lip™ design  
increases coupling retention.



## AL-LDHC Series Oilfield Hose Coupling

- Lightweight aluminum with abrasion resistant anodized hard coating
- Multiple collar segments evenly distribute pressure on the hose for even sealing
- Locking Lip™ provides better coupling retention than other designs

View Up To Date Info



◀ SCAN OR VISIT  
[KOA.link/  
AL-LDHC](https://KOA.link/AL-LDHC)

Part Number	Size (in)	Working Pressure (psi) at 68°F	Burst Pressure (psi) at 68°F	Weight Each (lbs)	Standard Carton
AL-LDHC1000	10	200	600	41.20	1
AL-LDHC1200	12	200	600	57.30	1



## GEC-B Series Grooved Couplings

- For use with AL-LDHC coupling or grooved end pipe
- Durable ductile iron
- UL listed
- Buna (nitrile) gasket included

View Up To Date Info



◀ SCAN OR VISIT  
[KOA.link/  
GEC](https://KOA.link/GEC)

Part Number	Size (in)	Weight Each (lbs)	Standard Carton
GEC-B1000	10	26.15	1
GEC-B1200	12	30.65	1



## GEG-BUNA Series Grooved Gasket

- Fits GEC-B Series couplings
- Buna (nitrile) material, resistant to oil, gas, and moderately aggressive chemicals

View Up To Date Info



◀ SCAN OR VISIT  
[KOA.link/  
GEG](https://KOA.link/GEG)

Part Number	Size (in)	Weight Each (lbs)	Standard Carton
GEG-BUNA1000	10	0.771	1
GEG-BUNA1200	12	0.889	1

Because we continually examine ways to improve our products, we reserve the right to alter specifications or discontinue products without prior notice.



## OROFLEX® OIL OFOIL Series Polyurethane Oil Transfer Hose

### GENERAL APPLICATIONS

- Brackish and seawater
- Fluid transfer (see chemical chart)
- Fuels and oils transport

### CONSTRUCTION

Polyurethane (TPU) hose using an extruded through-the-weave process with circular woven high tenacity polyester reinforcement. Four electrical wires protected with a braided sheet of polyester to help prevent static build up.

### SERVICE TEMPERATURE RANGE

-58°F (-50°C) to +150°F (+65°C);  
Intermittent service to +175°F (+79°C)

### AVAILABLE COLORS:

Standard color is Tan – also available in NATO Green and Black via special order. Contact Kuriyama customer service for details.

View Up To Date Info



◀ SCAN OR VISIT  
[KOA.link/  
OFOIL](https://KOA.link/OFOIL)



### FEATURES AND ADVANTAGES

- **Premium Polyurethane (TPU) Material** – Exhibits exceptional resistance to abrasion, allowing for use in applications where severe abrasion is a factor and providing longer service life versus rubber or PVC hoses. Also, exhibits exceptional resistance to oils and petroleum based products.
- **Grounding Wires** – Hose contains four wires to help prevent the buildup of static electricity for added safety.
- **Unique Woven Construction** – Specially designed weave pattern provides resistance to snaking, kinking, stretching and twisting.
- **Longer Lengths** – Manufactured in special 660 foot lengths to reduce possible leaking points.
- **Smooth TPU Tube** – Provides low friction loss.
- **Compact Design** – Flat hose design rolls up into tight coils for easy storage and transport, takes up less space than other hoses.
- **MIL-Spec** – In compliance with MIL-PRF-370.

Series Number	Size		Hose ID		Wall Thickness (in)	Working Pressure (psi) at 68°F	Burst Pressure (psi) at 68°F	Coil Length (ft)	Weight (lbs/ft)
	(in)	(mm)	(in)	(mm)					
OFOIL-200	2	50.8	2.059	52.3	0.087	150	600	660/200	0.26
+OFOIL-250	2 1/2	63.5	2.650	67.3	0.087	150	600	660/200	0.35
OFOIL-300	3	76.2	3.059	77.7	0.093	150	600	660/200	0.43
+OFOIL-350	3 1/2	88.9	3.551	90.2	0.095	150	600	660/200	0.57
OFOIL-400	4	101.6	4.059	103.1	0.106	150	600	660/200	0.67
OFOIL-600	6	152.4	6.059	153.9	0.138	150	600	660/200	1.18

+ **NOTE:** This is a non-stock product. Minimum order requirements may apply. Contact Kuriyama customer service for details.

Because we continually examine ways to improve our products, we reserve the right to alter specifications or discontinue products without prior notice.



## SJMD Series *Single Jacket* DJMD Series *Double Jacket* “Contractor Grade” Hoses

SJMD  
Single Jacket

DJMD  
Double Jacket

### GENERAL APPLICATIONS

- Construction pumps
- Plant clean-up
- Pump water discharge
- Wash down – ships/factories

### CONSTRUCTION

Single or double jacket with 100% polyester yarn. Water and mildew-resistant cover, will not rot, even if the hose is stored wet.

### SERVICE TEMPERATURE RANGE

-25°F (-31°C) to +185°F (+85°C)

View Up To Date Info



◀ SCAN OR VISIT  
[KOA.link/  
SJMD-DJMD](http://KOA.link/SJMD-DJMD)

### FEATURES AND ADVANTAGES

- **Versatile Natural Rubber Tube** – Exhibits a good combination of strength and extreme flexibility for ease-of-use.
- **Wide Service Temperature Range** – Hose may be used in a wide range of service temperature ranges from -25°F to +185°F.
- **Double and Single Jacket Options** – Available with a double jacket for additional external abrasion resistance.
- **Identification Stripe** – Red stripe indicates single jacket version, blue stripe indicates double jacket version.
- **Compact Design** – Flat hose design rolls up into tight coils for easy storage and transport, takes up less space than other hoses.
- **Storage/Shipping Carton** – Hoses are individually packaged in cartons for ease of handling and shipping.

Series Number	Size		Hose ID		Working Pressure (psi) at 68°F	Burst Pressure (psi) at 68°F	Coil Length (ft)	Coupling Bowl Size (in)	Weight (lbs/ft)
	(in)	(mm)	(in)	(mm)					
SJMD150	1 1/2	38.1	1.614	41.0	150	450	100/50	1 11/16	0.21
SJMD200	2	50.8	2.126	54.0	150	450	100/50	2 1/4	0.31
SJMD250	2 1/2	63.5	2.638	67.0	150	450	100/50	2 3/4	0.37
SJMD300	3	76.2	3.150	80.0	150	450	100/50	3 1/4	0.45
SJMD400	4	101.6	4.055	103.0	150	450	100/50	4 9/32	0.56
DJMD150	1 1/2	38.1	1.575	40.0	200	600	100	1 13/16	0.25
DJMD250	2 1/2	63.5	2.598	66.0	200	600	100	2 13/16	0.44

Because we continually examine ways to improve our products, we reserve the right to alter specifications or discontinue products without prior notice.



## DJ Series

Double Jacket “Contractor Grade” Coupled with Male and Female Aluminum Rocker Lug Couplings

### GENERAL APPLICATIONS

Heavy duty equipment or pump rental  
Hydrant-to-truck water supply line  
Municipal washdown  
Ship deck washdown

### CONSTRUCTION

Double jacket with 100% polyester yarn. Water and mildew-resistant cover, will not rot, even if the hose is stored wet.

### SERVICE TEMPERATURE RANGE

-25°F (-31°C) to +185°F (+85°C)

View Up To Date Info



◀ SCAN OR VISIT  
[KOA.link/  
DJ](https://KOA.link/DJ)

### FEATURES AND ADVANTAGES

- **Versatile Natural Rubber Tube** – Exhibits a good combination of strength and extreme flexibility for ease-of-use.
- **Wide Service Temperature Range** – Hose may be used in a wide range of service temperature ranges from -25°F to +185°F.
- **Double Jacket** – Double jacket provides additional external abrasion resistance.
- **Compact Design** – Flat hose design rolls up into tight coils for easy storage and transport, takes up less space than other hoses.
- **Storage/Shipping Carton** – Hoses are individually packaged in cartons for ease of handling and shipping.

Part Number	Size		Length (ft)	Thread Type	Working Pressure (psi) at 68°F	Weight Each (lbs)
	(in)	(mm)				
DJ150NSTX50	1 1/2	38.1	50	NST	200	14
DJ150NPSHX50	1 1/2	38.1	50	NPSH	200	14
DJ250NSTX50	2 1/2	63.5	50	NST	200	23
DJ250NPSHX50	2 1/2	63.5	50	NPSH	200	23

Because we continually examine ways to improve our products, we reserve the right to alter specifications or discontinue products without prior notice.

FRICITION LOSS OF PVC LAYFLAT HOSE (PSI/100 FT.)

GPM	1.5"	2"	2.5"	3"	4"	6"	8"	10"	12"	14"	16"
20	1.2	-	-	-	-	-	-	-	-	-	-
30	2.4	-	-	-	-	-	-	-	-	-	-
40	5.1	1.1	-	-	-	-	-	-	-	-	-
50	6.0	-	-	-	-	-	-	-	-	-	-
60	-	2.4	1.4	-	-	-	-	-	-	-	-
80	-	4.1	1.9	1.0	-	-	-	-	-	-	-
90	17.0	-	-	-	-	-	-	-	-	-	-
100	-	6.0	2.8	1.2	-	-	-	-	-	-	-
120	-	-	-	1.8	-	-	-	-	-	-	-
140	-	-	-	2.2	-	-	-	-	-	-	-
160	-	-	-	2.6	0.6	-	-	-	-	-	-
180	-	-	-	3.3	0.7	-	-	-	-	-	-
200	-	22	7	-	0.8	-	-	-	-	-	-
220	-	-	-	-	1.0	-	-	-	-	-	-
240	-	-	-	-	1.1	-	0.2	-	-	-	-
250	-	-	-	5	-	-	-	-	-	-	-
260	-	-	-	-	1.3	0.2	-	-	-	-	-
280	-	-	-	-	1.4	0.2	-	-	-	-	-
300	-	-	-	-	1.6	0.2	-	-	-	-	-
340	-	-	-	-	-	0.3	-	-	-	-	-
350	-	-	22	-	-	-	-	-	-	-	-
380	-	-	-	-	-	0.4	-	-	-	-	-
420	-	-	-	-	-	0.5	-	-	-	-	-
460	-	-	-	-	-	0.6	-	-	-	-	-
500	-	-	-	-	4	0.7	-	-	-	-	-
540	-	-	-	-	-	0.8	-	-	-	-	-
580	-	-	-	-	22	0.9	-	-	-	-	-
620	-	-	-	-	-	1.0	-	-	-	-	-
660	-	-	-	-	-	1.1	-	-	-	-	-
1,200	-	-	-	-	-	3.0	-	-	-	-	-
1,250	-	-	-	-	22	-	-	-	-	-	-
1,800	-	-	-	-	-	-	1.5	-	-	-	-
2,500	-	-	-	-	-	-	-	1.0	-	-	-
3,500	-	-	-	-	-	-	-	-	0.8	-	-
3,630	-	-	-	-	-	22	-	-	-	-	-
5,000	-	-	-	-	-	-	11	-	-	0.6	-
6,000	-	-	-	-	-	-	-	-	-	-	0.4
8,000	-	-	-	-	-	-	-	8	-	-	-
12,000	-	-	-	-	-	-	-	-	8	-	-
15,000	-	-	-	-	-	-	-	-	-	5	-
16,000	-	-	-	-	-	-	-	-	-	-	30

Because we continually examine ways to improve our products, we reserve the right to alter specifications or discontinue products without prior notice.

## FRICITION LOSS OF OROFLEX® LAYFLAT HOSES IN (PSI/100 FT.)

GPM	1	1 1/4	1 1/2	1 3/4	2	2 1/2	2 3/4	3	3 1/2	4	4 1/2	5	6	8	10	12
1	0.04	0.01	0.01	—	—	—	—	—	—	—	—	—	—	—	—	—
2	0.15	0.05	0.02	0.01	—	—	—	—	—	—	—	—	—	—	—	—
5	0.82	0.28	0.11	0.05	0.03	0.01	0.01	—	—	—	—	—	—	—	—	—
7	1.53	0.52	0.21	0.10	0.05	0.02	0.01	0.01	—	—	—	—	—	—	—	—
10	2.96	1.00	0.41	0.19	0.10	0.03	0.02	0.01	0.01	—	—	—	—	—	—	—
15	6.27	2.11	0.87	0.41	0.21	0.07	0.05	0.03	0.01	0.01	—	—	—	—	—	—
20	10.67	3.60	1.48	0.70	0.36	0.12	0.08	0.05	0.02	0.01	0.01	—	—	—	—	—
25	16.13	5.44	2.24	1.06	0.55	0.19	0.12	0.08	0.04	0.02	0.01	0.01	—	—	—	—
30	22.59	7.62	3.14	1.48	0.77	0.26	0.16	0.11	0.05	0.03	0.01	0.01	—	—	—	—
35	30.05	10.14	4.17	1.97	1.03	0.35	0.22	0.14	0.07	0.04	0.02	0.01	0.00	—	—	—
40	38.47	12.98	5.34	2.52	1.32	0.44	0.28	0.18	0.09	0.04	0.03	0.02	0.01	—	—	—
45	47.84	16.14	6.64	3.13	1.64	0.55	0.35	0.23	0.11	0.06	0.03	0.02	0.01	—	—	—
50	58.13	19.61	8.07	3.81	1.99	0.67	0.42	0.28	0.13	0.07	0.04	0.02	0.01	—	—	—
60	81.45	27.48	11.31	5.34	2.79	0.94	0.59	0.39	0.18	0.10	0.05	0.03	0.01	—	—	—
70	108.33	36.54	15.04	7.10	3.70	1.25	0.79	0.51	0.24	0.13	0.07	0.04	0.02	0.00	—	—
80	—	46.78	19.25	9.09	4.74	1.60	1.01	0.66	0.31	0.16	0.09	0.05	0.02	0.01	—	—
90	—	58.17	23.94	11.30	5.90	1.99	1.25	0.82	0.39	0.20	0.11	0.07	0.03	0.01	—	—
100	—	70.69	29.09	13.73	7.17	2.42	1.52	0.99	0.47	0.25	0.14	0.08	0.03	0.01	—	—
125	—	106.82	43.96	20.75	10.83	3.65	2.30	1.50	0.71	0.37	0.21	0.12	0.05	0.01	—	—
150	—	—	61.59	29.07	15.17	5.12	3.22	2.11	0.99	0.52	0.29	0.18	0.07	0.02	0.01	—
175	—	—	81.92	38.67	20.18	6.81	4.28	2.80	1.32	0.69	0.39	0.23	0.10	0.02	0.01	—
200	—	—	104.87	49.50	25.84	8.71	5.48	3.59	1.69	0.88	0.50	0.30	0.12	0.03	0.01	—
225	—	—	—	61.56	32.13	10.84	6.81	4.46	2.10	1.10	0.62	0.37	0.15	0.04	0.01	—
250	—	—	—	74.60	39.04	13.17	8.28	5.42	2.56	1.33	0.75	0.45	0.19	0.05	0.02	—
275	—	—	—	89.23	46.57	15.71	9.88	6.46	3.05	1.59	0.90	0.54	0.22	0.05	0.02	—
300	—	—	—	104.81	54.70	18.45	11.60	7.59	3.58	1.87	1.05	0.63	0.26	0.06	0.02	—
350	—	—	—	—	72.75	24.54	15.43	10.10	4.77	2.49	1.40	0.84	0.35	0.09	0.03	—
400	—	—	—	—	93.14	31.42	19.75	12.93	6.10	3.18	1.79	1.07	0.44	0.11	0.04	—
450	—	—	—	—	—	39.07	24.56	16.08	7.59	3.96	2.23	1.34	0.55	0.14	0.05	—
500	—	—	—	—	—	47.47	29.84	19.54	9.22	4.81	2.71	1.62	0.67	0.16	0.06	0.02
600	—	—	—	—	—	66.52	41.82	27.37	12.92	6.74	3.80	2.27	0.94	0.23	0.08	0.03
700	—	—	—	—	—	88.47	55.62	36.41	17.18	8.97	5.05	3.03	1.24	0.31	0.10	0.04
800	—	—	—	—	—	113.26	71.20	46.61	22.00	11.48	6.47	3.87	1.59	0.39	0.13	0.05
1000	—	—	—	—	—	—	107.59	70.43	33.24	17.35	9.78	5.85	2.41	0.59	0.20	0.08
1200	—	—	—	—	—	—	—	98.68	46.58	24.31	13.70	8.20	3.37	0.83	0.28	0.12
1400	—	—	—	—	—	—	—	131.24	61.95	32.33	18.22	10.91	4.49	1.11	0.37	0.15
1600	—	—	—	—	—	—	—	—	79.31	41.39	23.32	13.96	5.75	1.42	0.48	0.20
1800	—	—	—	—	—	—	—	—	98.62	51.47	29.00	17.36	7.14	1.76	0.59	0.24
2000	—	—	—	—	—	—	—	—	—	62.55	35.24	21.10	8.68	2.14	0.72	0.30
2500	—	—	—	—	—	—	—	—	—	94.51	53.26	31.88	13.12	3.23	1.09	0.45
3000	—	—	—	—	—	—	—	—	—	—	74.62	44.67	18.38	4.53	1.53	0.63
3500	—	—	—	—	—	—	—	—	—	—	99.24	59.41	24.45	6.02	2.03	0.84
4000	—	—	—	—	—	—	—	—	—	—	—	76.06	31.30	7.71	2.60	1.07
4500	—	—	—	—	—	—	—	—	—	—	—	94.58	38.92	9.59	3.23	1.33
5000	—	—	—	—	—	—	—	—	—	—	—	—	47.30	11.65	3.93	1.62
5500	—	—	—	—	—	—	—	—	—	—	—	—	56.42	13.90	4.69	1.93
6000	—	—	—	—	—	—	—	—	—	—	—	—	66.27	16.33	5.51	2.27
6500	—	—	—	—	—	—	—	—	—	—	—	—	76.84	18.93	6.39	2.63
7000	—	—	—	—	—	—	—	—	—	—	—	—	88.14	21.71	7.32	3.01
7500	—	—	—	—	—	—	—	—	—	—	—	—	100.14	24.67	8.32	3.42
8000	—	—	—	—	—	—	—	—	—	—	—	—	—	27.80	9.38	3.86

**Note:** These calculations are theoretical and based on straight lines. Liquid is water at 20°C.  
 Recommended maximum velocity for constant work: 11.5 ft/s (3.5m/s).  
 Maximum recommended velocity for non constant work: 16.4 ft/s (5 m/s).  
 Values in red match with flows given 16.4 ft/s (5 m/s).

Because we continually examine ways to improve our products, we reserve the right to alter specifications or discontinue products without prior notice.

**VINYLFLOW® LONGITUDINAL ELONGATION PERCENTAGE (ON FLAT GROUND ONLY)**

Series Number	Pressure (psi)							
	10	20	30	40	50	60	70	80
VF150	0.00	0.01	0.02	0.06	0.14	0.17	0.35	0.50
VF200	0.01	0.03	0.04	0.15	0.32	0.38	0.61	0.84
VF250	0.06	0.15	0.23	0.50	0.79	0.95	1.33	1.57
VF300	0.03	0.14	0.21	0.34	0.63	0.76	1.10	-
VF400	0.14	0.35	0.53	0.90	1.40	1.68	1.98	-
VF600	0.14	0.42	0.63	1.08	1.35	-	-	-
VF800	0.21	0.57	0.86	1.47	-	-	-	-
VF1000	0.15	0.39	0.59	-	-	-	-	-
VF1200	0.14	0.55	0.82	-	-	-	-	-
VF1600	0.00	0.28	0.42	-	-	-	-	-

**IRONSIDES® LONGITUDINAL ELONGATION PERCENTAGE (ON FLAT GROUND ONLY)**

Series Number	Pressure (psi)														
	10	20	30	40	50	60	70	80	90	100	110	120	130	140	150
IS150	0.00	0.10	0.10	0.20	0.30	0.36	0.40	0.50	0.60	0.60	0.80	0.90	0.90	1.00	1.10
IS200	0.00	0.00	0.00	0.10	0.10	0.10	0.20	0.40	0.60	0.60	0.70	0.80	0.80	0.90	1.10
IS250	0.00	0.00	0.10	0.20	0.30	0.40	0.40	0.60	0.60	0.80	1.00	1.10	1.10	1.30	1.30
IS300	0.00	0.10	0.10	0.20	0.30	0.40	0.50	0.50	0.60	0.70	0.80	1.00	1.10	-	-
IS400	0.00	0.10	0.20	0.30	0.40	0.50	0.70	0.80	0.90	1.20	1.30	1.40	1.40	-	-
IS600	0.00	0.10	0.30	0.50	0.50	0.60	0.80	0.90	1.00	1.20	-	-	-	-	-
IS800	0.10	0.20	0.50	0.80	1.00	1.20	1.50	0.00	-	-	-	-	-	-	-

**VINYLFLOW® EZ-LITE™ LONGITUDINAL ELONGATION PERCENTAGE (ON FLAT GROUND ONLY)**

Series Number	Pressure (psi)					
	10	20	30	40	50	60
VFL150	0.00	0.10	0.20	0.30	0.40	0.60
VFL200	0.00	0.20	0.30	0.60	0.80	-
VFL300	0.20	0.40	0.80	1.20	-	-
VFL400	0.20	0.50	1.40	1.90	-	-
VFL600	0.00	0.40	0.80	1.40	-	-
VFL800	0.20	0.80	1.60	2.20	-	-
VF800	0.21	0.57	0.86	1.47	-	-
VF1000	0.15	0.39	0.59	-	-	-
VF1200	0.14	0.55	0.82	-	-	-
VF1600	0.00	0.28	0.42	-	-	-

**LAYFLAT HOSE ID SIZE GUIDE**

Hose ID	3/4	1	1-1/2	2	3	4	5	6	8	10	12	14	16
Hose Width When Flat	5/8	1-5/8	2-1/2	3-1/2	5	6-1/2	8	9-1/2	13	16	19	22	25

Because we continually examine ways to improve our products, we reserve the right to alter specifications or discontinue products without prior notice.

### VINYLFLOW®, VINYLFLOW® EZ-LITE MAXIMUM LENGTH AVAILABILITY

Series Number	Max. Available Length
VF/VFL150	1000
VF/VFL200	1000
VF250	800
VF/VFL300	800
VF/VFL400	750
VF/VFL600	700
VF/VFL800	650
VF1000	500
VF1200	500
VF1400	500
VF1600	500

### IRONSIDES® MAXIMUM LENGTH AVAILABILITY

Series Number	Max. Available Length
IS150	700
IS200	650
IS250	600
IS300	550
IS400	500
IS600	450
IS800	450
IS1000	450

### FOR SLOPED GROUND, ADD HEAD PRESSURE SHOWN BELOW

Hose	Slope Angle	Additional Head Pressure
Vinylflow®	5°	11
	10°	23
Vinylflow® EZ-Lite™	15°	34
	20°	44
IronSides®	30°	65
	35°	75

Because we continually examine ways to improve our products, we reserve the right to alter specifications or discontinue products without prior notice.

LAYFLAT HOSE MATERIAL PROPERTIES

Product Name	Series	Tube Material	General Applications	Overall Durability	Drag Application Suitability	Water	Liquid Manure
Vinylflow® EZ-Lite™	VFL	PVC	Water transfer	Standard	Limited	Excellent	Limited
Vinylflow®	VFL	PVC	Water transfer & drip irrigation	Standard	Limited	Excellent	Limited
Ironsides™	IS	PVC	Water transfer and mining applicaions	Good	Limited	Excellent	Limited
PVC Layflat Assemblies	LF & LFR	PVC	Water transfer	Standard	Not Recommended	Excellent	Not Recommended
OROFLEX® 10	OF10	PVC/NBR	Water	Very Good	Limited	Excellent	Excellent
OROFLEX® 20	OF20B & OF20Y	PVC/NBR	Water & liquid manure transfer	Excellent	Good	Excellent	Excellent
OROFLEX® Drag	OFDG	TPU	Manure spreaders	Excellent	Excellent	Excellent	Excellent
OROFLEX® Bandama	BD	PVC/NBR	Traveling irrigators	Excellent	Very Good	Excellent	Excellent
OROFLEX® Aqua	OFAQ	Polyurethane	Water Bypass	Excellent	Very Good	Excellent	Excellent
OROFLEX® Terrain	OFTR	Polyurethane	Frac Water Transfer	Excellent	Very Good	Excellent	Excellent
OROFLEX® Oil	OFOIL	Polyurethane	Military Oil Transfer	Excellent	Very Good	Excellent	Excellent
Mill Discharge Hose	SJMD & DJMD	Rubber/ Polyester	Water transfer	Standard	Not Recommended	Excellent	Not Recommended
Mill Discharge Assemblies	DJ	Rubber/ Polyester	Water transfer	Standard	Not Recommended	Excellent	Not Recommended

Because we continually examine ways to improve our products, we reserve the right to alter specifications or discontinue products without prior notice.

## KEY TO CHEMICAL RESISTANT CHART

- A Fluid has little or no effect
- B Fluid has minor to moderate effect
- C Fluid has severe effect
- T No data-likely to have minor effect
- X No data-likely to have severe effect
- No data

NAME	CONDITIONS			TPU POLYETHER POLYURETHANE	NBR	PVC	BRASS	ALUMINIUM
	%	°C	HOURS					
Acetaldehyde	40	21	1000	C	X	X	A	A
Acetamide	50	21	1000		B	-	-	-
Acetylene		21	1000					
Acetic acid	20	21	1000	C	X	A	X	B
Acetic acid	5	21	1000	C	X	A		
Acetic acid	5	100	10					
Acetic acid	98					C		
Acetic acid, glacial		38	1000				-	-
Acetic anhydride			1000				-	-
Acetone		21	10000		X	X	A	A
Acetone			1000	C	X			
Acetone		21	1000		X	C		
Alcohol			1000					
Allyl alcohol			1000		-	X	-	-
Aluminium chloride	5	60	168	B	-	-		
Aluminium chloride solutions					A	-	X	X
Aluminium salts				B	A	A	-	B
Aluminium sulfate solutions				B	A	-	X	X
Alums								
Ammonia				B	X	A	-	-
Ammonia	28	21	1000			A	X	-
Ammonium chloride solutions	10				B	A	X	-
Ammonium hydroxide	2	21	10000	A	B	X	X	-
Ammonium hydroxide solutions					-	-	X	-
Ammonium salts				B				
Ammonium sulfate solutions				B				
Amyl acetate				C	X	X	A	X
Amyl alcohol				C	B	B	A	A
Aniline		21	10000	C	X	-	X	B
Aniseed oil								
Asphalt					B	X	A	-
ASTM oil No.1		149		B	A	B	A	A
ASTM Oil No.3		149		B	A	X	A	A
ASTM reference Fuel A		70		B	A	B	A	A
ASTM reference Fuel B		70		B	A	X	A	A
ASTM reference Fuel C		70		C	B	X	A	-
ASTM reference Fuel C								
Barium hydroxide solutions				B	A	X	-	-
Beer					-	-	-	-
Benzaldehyde				C	X	X	-	A
Benzene		21	1000	C	B	X	A	A
Benzoic acid	3	100	10				-	-
Benzoic acid	3	100	10	C	X	X		
Benzole								
Benzyl alcohol					X	A	-	-

Because we continually examine ways to improve our products, we reserve the right to alter specifications or discontinue products without prior notice.

## KEY TO CHEMICAL RESISTANT CHART

- A** Fluid has little or no effect
- B** Fluid has minor to moderate effect
- C** Fluid has severe effect
- T** No data-likely to have minor effect
- X** No data-likely to have severe effect
- No data

NAME	%	CONDITIONS		TPU POLYETHER POLYURETHANE	NBR	PVC	BRASS	ALUMINIUM
		°C	HOURS					
Bitumen								
Bleaching lye		21	288					
Borax solutions					A	A	B	-
Boric acid solutions	10			B	A	A	X	A
Brandy								
Bromine, anhydrous liquid				B	X	X	A	A
Butane		21	1000		X	X		
Butanol		21	10000		A	A	A	A
Butter					-	-	-	-
Butter milk								
Butyl acetate		21	10000				A	A
Butyl acetate				C	X	A		
Butyl alcohol				B	A	A	A	A
Butylene glycol							-	-
Butyraldehyde					X	-	A	-
Butyric acid					-	A	B	A
Calcium chloride		21	10000	B	A	A	B	-
Calcium chloride solutions	10				A	A	-	-
Calcium hydroxide solutions				B	B	-	X	X
Calcium hypochlorite	5				-	B	-	-
Calcium hypochlorite		60	1000		-	B		
Camphor								
Carbon bisulfide								
Carbon Dioxide				A	A	A	A	A
Carbon disulphide		21	1000	B	B	X	B	B
Carbon monoxide					B	A	A	A
Carbon tetrachloride		21	1000	C	X	X	B	X
Carbon tetrachloride								
Castor oil				B	A	A	A	A
Catechol	6							
Caustic soda	40				X	X	-	-
Chloric Acid 35%						A		
Chlorine gas, dry				B			-	-
Chlorine gas, wet					X	X		
Chlorine water					-	X	-	-
Chloroacetic acid				C	B	-	-	-
Chlorobenzene					X	X	A	A
Chloroform		21	1000	C	X	X	A	A
Chloromic acid	40	80	1000	C				
Chlorosulfonic acid					X	X	-	-
CELLOSOLVE Acetate					X	A	-	-
Citric acid	10	80	1000	B	X	A	X	A
Copper chloride solutions					B	A	X	-
Copper salts	10							
Copper Sulfate solutions					A	A	X	X
Cotton seed oil		21	1000	B	B	-	A	A
Creosote oil					B	X	X	A
Cresol		21	10000	C	X	-	-	A
Cupric sulphate		21	10000	B	A	A	X	X
Cyclohexane				Dissolve	B	X	A	-

Because we continually examine ways to improve our products, we reserve the right to alter specifications or discontinue products without prior notice.

## KEY TO CHEMICAL RESISTANT CHART

- A** Fluid has little or no effect
- B** Fluid has minor to moderate effect
- C** Fluid has severe effect
- T** No data-likely to have minor effect
- X** No data-likely to have severe effect
- No data

NAME	%	CONDITIONS		TPU POLYETHER POLYURETHANE	NBR	PVC	BRASS	ALUMINUM
		°C	HOURS					
Cyclohexanol					B	X	-	-
Cyclohexanone					X	X	-	B
Decalin					B	-	A	-
Dibutyl Phthalate		30	1000	C	X	A	A	A
Diesel oil						C		
Diesel fuel					A	C	A	A
Diethyl ether		21	10000		X	B	A	A
Diethyl sebacate					X	X	A	-
Dimethyl formamide				Dissolve			-	-
Dimethyl Phthalate					X	-		
Diocetyl Phthalate							A	A
Dioxane		21	1000		X	X	A	A
Epichlorohydrin					-	-	-	-
Ethanol		21	10000		A	B	B	A
Ether				B	B	B	A	A
Ethyl acetate		21	1000	C	X	X	A	A
Ethyl acetate								
Ethyl Alcohol				B	A	B	B	A
Ethyl chloride				C	X	X	B	A
Ethylene dichloride		21	1000		X	X	-	-
Ethylene glycol		21	10000	B	A	A	A	A
Ethylene oxide								
Ferric chloride	3	100	10	B	B	A	X	X
Ferric chloride		21	10000	B				
Ferric chloride solutions					B	A	X	X
Fluosilicic acid					X	X	-	A
Formaldehyde	30	21	10000	B	-	-	A	B
Formic acid	40			C	-	X		
Formic Acid							B	-
Formic Acid	5	21	1000					
Formic Acid	5	100	10					
Freon 11								
Freon 113		55			X	X		
Freon 114								
Freon 12					X	X	-	-
Freon II		21	1000					
Fuel oil				B	A	X	A	A
Gasoline				B	B	C	A	A
Glue					B	A	X	A
Glycerin				B	A	A	A	A
Glycerol		60	1000		A	A	A	A
Glycol				B	A	-		
Heptane		21	1000		A	B	A	A
Hexane		60	1000	B	A	X	A	-
Hydrazine				C	X	X	-	-
Hydrochloric acid	10	21	10	C				
Hydrochloric acid	20				B	X		
Hydrochloric acid	10	21	20000					
Hydrochloric acid	1			C				
Hydrochloric acid	37				-	X	X	X

Because we continually examine ways to improve our products, we reserve the right to alter specifications or discontinue products without prior notice.

## KEY TO CHEMICAL RESISTANT CHART

- A** Fluid has little or no effect
- B** Fluid has minor to moderate effect
- C** Fluid has severe effect
- T** No data-likely to have minor effect
- X** No data-likely to have severe effect
- No data

NAME	CONDITIONS			TPU POLYETHER POLYURETHANE	NBR	PVC	BRASS	ALUMINIUM
	%	°C	HOURS					
Hydrocyanic acid				-	-	-	-	-
Hydrofluoric acid	48			X	X	X	X	X
Hydrofluoric acid	75			C				
Hydrogen				A	X	X	-	-
Hydrogen peroxide	30			B	B	A	X	A
Hydrogen peroxide	3	70	10					
Hydrogen peroxide	3	21	10					
Hydrogen sulfide				C	X	X	-	A
Iron salts	20				A	A	-	-
Isooctane				B	A	X	A	-
Isopropanol		60	1000	B	A	B	B	A
Isopropyl alcohol					A	B	B	A
JP-4 Jet Fuel				C	A	X	A	B
Kerosene				B	B	C	A	A
Kerosene		21	1000					
Lacquer solvents								
Lactic acid	50			B	A	-	B	X
Lactic acid	90	21	10000		-	-	B	X
Linseed oil				B	B	A	B	A
Lithium grease		100						
Lubricating oil				B	B	-	B	A
Magnesium chloride solutions					-	-		
Magnesium hydroxide solutions					-	-	-	X
Maleic acid	25	21	10000	C	X	X	-	-
Mercuric chloride solutions					B	B	X	X
Mercury				A	B	A	X	X
Methanol		21	1000		A	B	B	A
Methyl alcohol					A	B	B	A
Methyl ethyl ketone		21	10000	C	X	X	A	A
Methyl ethyl ketone								
Methyl isobutyl ketone					X	X	-	-
Methylene chloride		21	1000	C	X	X	A	X
Mineral oils		80	1000	B	A	A	A	A
Naphtha				B	B	X	A	B
Naphthalene					-	-	A	A
Nickel salts				C	A	B	-	-
Nitric acid	70			C	X	X	X	-
Nitric acid	30				X	X	X	-
Nitric acid	60				X	X	X	-
Nitric acid	10	21	20000	C	X	X	X	-
Nitric acid, red fuming					X	X	-	-
Nitrobenzene				C	X	X	A	A
Nitromethane					X	X	A	-
Octane					-	-	-	-
Oleic acid				B	B	B	B	A
Oleic acid	100	80	1000					
Oleum	20/25				X	X	-	-
Olive oils		80	1000		B	B	B	A
Oxalic acid	5	100	10	A	-	X	X	B

Because we continually examine ways to improve our products, we reserve the right to alter specifications or discontinue products without prior notice.

## KEY TO CHEMICAL RESISTANT CHART

- A Fluid has little or no effect
- B Fluid has minor to moderate effect
- C Fluid has severe effect
- T No data-likely to have minor effect
- X No data-likely to have severe effect
- No data

NAME	CONDITIONS			TPU POLYETHER POLYURETHANE	NBR	PVC	BRASS	ALUMINIUM
	%	°C	HOURS					
Palmitic acid					B	-	X	A
Paraffin oil					A	-	A	-
Perchloroethane								
Perchloroethylene		120	10	C	X	X	X	-
Perchloroethylene		100	10					
Perchloroethylene								
Petrol		21	1000					
Petroleum				B				
Phenol		21	10000	C	X	X	X	B
Phenol		93	10					
Phenol								
Phenyl etyl alcohol								
Phosphoric acid	85	21	10000	B	X	A	X	X
Phosphoric acid	10	21	10			A		
Pickling solution	20				-	-		
Plasticizers								
Potassium bromide	10				-	A	-	-
Potassium chloride		21	10000	B	-	A	-	-
Potassium dichromate solutions					-	A	-	-
Potassium hydroxide	10	21	100				-	-
Potassium hydroxide	0,1	21	500		B	A		-
Potassium iodide	10				A	A	-	-
Potassium nitrate	10			B	-	A	-	-
Potassium permanganate	1				-	X		
Potassium permanganate	50	21	1000				-	-
Potassium sulphate					-	A	-	-
Propane				B	X	X		
Propanol					-	B	-	-
Pydraul 312					X	X	-	-
Pyridine		21	10000		-	X	A	A
Pyridine		21	1000					
Pyridine								
Resorcinol	10	21	1000					
SAE 10 oil				B				
Salicylic acid					X	A	-	B
Salt								
Sea Water				B	B	A	B	-
Silicone fluids		80	1000					
Silicone Grease					B	B	A	-
Silver salts				B				
SKYDROL 500B								
Soap	1	120	10	B	A	B	-	-
Sodium bicarbonate	10	80	1000	B	A	A	B	-
Sodium bisulphite	1	100	10	B	A	A	-	-
Sodium bromide								
Sodium carbonate	1	120	10	B	A	A	B	X
Sodium chloride	0,7	100	10	B			X	X
Sodium chloride	20	80	1000	B	A	A		
Sodium dichromate	20			B	A	A	-	-

Because we continually examine ways to improve our products, we reserve the right to alter specifications or discontinue products without prior notice.

## KEY TO CHEMICAL RESISTANT CHART

- A** Fluid has little or no effect
- B** Fluid has minor to moderate effect
- C** Fluid has severe effect
- T** No data-likely to have minor effect
- X** No data-likely to have severe effect
- No data

NAME	CONDITIONS			TPU POLYETHER POLYURETHANE	NBR	PVC	BRASS	ALUMINUM
	%	°C	HOURS					
Sodium hydroxide	1	100	100			A	-	-
Sodium hydroxide	0,1	21	10000	B		A		
Sodium hydroxide	20					A		
Sodium hypochlorite	0,4	70	10					
Sodium hypochlorite	5				X	A	X	X
Sodium nitrate	10			B	X		B	B
Sodium perborate	1	100	10		X	A	X	A
Sodium phosphohate	10				-	A	X	X
Sodium sulphate		21	10000	B	A	A	-	-
Sodium sulphate	10	21	20000					
Sodium sulphide				B	A	A	-	-
Sodium sulphite					B	A		
Sodium thiosulphide								
Soybean oil					B	B	-	-
Stannouschloride	15				A	A	-	-
Steam		100		C	X	X	-	-
Stearic acid					B	A	X	X
Styrene				B	X	-	B	X
Sulfur dioxide gas				A	X	-	-	-
Sulfur dioxide liquid					X	X	-	-
Sulfuric acid fuming oleum	20				X	X	-	-
Sulfuric acid,above	50							
Sulfuric acid up to	50							
Sulfuric acid above	50					X		
Sulfurous acid					X	-		
Sulfur, molten								
Sulphuric acid	10	21	10		X	A		
Sulphuric acid	30	80	1000		X	-		
Tannic acid	10				X	A	X	B
Tartaric acid				B	X	B		
Tetrahydrofuran		21	500		X	X	-	-
Tetrahydrofuran								
Tetraline					X	-	-	-
Toluene		21	1000		X	X	A	A
Toluene								
Tributyl phosphate					X	-	-	X
Trichlorethane					X	X	-	-
Trichloroethylene		21	10000				A	X
Trichloroethylene				C	X	-		
Triethanolamine					B	B	A	-
Trisodium phosphate solution				B	B	-	-	-
Tung oil					B	B	A	A
Turpentine		21	10000	B	B	A	B	-
Urea	20			B	B	-	-	-
Vaseline		80	1000					
Vegetable oils		80	1000	B	-	B	-	A
Water		100		B				
Water		70		B				

Because we continually examine ways to improve our products, we reserve the right to alter specifications or discontinue products without prior notice.

## KEY TO CHEMICAL RESISTANT CHART

- A Fluid has little or no effect
- C Fluid has severe effect
- X No data-likely to have severe effect
- B Fluid has minor to moderate effect
- T No data-likely to have minor effect
- No data

NAME	%	CONDITIONS		TPU POLYETHER POLYURETHANE	NBR	PVC	BRASS	ALUMINUM
		°C	HOURS					
Water		23		A	A	A	A	A
White spirit		21	1000	A	A	C	A	A
Xylene				C	X	C	-	-
Xylene		60	1000	A	A	A	A	A
Zinc chloride	3	100	10	B	B	B	X	X
Zinc chloride solutions				B	B	B	X	X

Because we continually examine ways to improve our products, we reserve the right to alter specifications or discontinue products without prior notice.





# Cautionary Statement

All Products sold and distributed by Kuriyama of America, Inc. are in the nature of commodities and they are sold by published specifications and not for particular purposes, uses or applications. Purchaser shall first determine their suitability for the intended purposes, uses or applications and shall either conduct its own engineering studies or tests, or retain qualified engineers, consultants or testing laboratories and consult with them before determining the proper use, suitability or propriety of the merchandise or Products for the intended purposes, uses or applications.

Kuriyama of America, Inc. ("Seller") does not recommend the Products for any particular purpose, use or application, and the Purchaser or user thereof shall assume full responsibility for the suitability, propriety, use and application of the Products. Purchaser shall follow all instructions contained in Seller's catalogs, brochures, technical bulletins and other documents regarding the Products. The Products, including but not limited to, hose, tubing or couplings, may fail due to the use or conveyance of substances at elevated or lowered temperatures or at excessive pressure, the conveyance of abrasive, injurious, flammable, explosive or damaging substances.

Hose or tubing used in bent configurations will be subjected to increased abrasion. Hose clamps or couplings may loosen after initial installation and all sections of hose and tubing including connections, couplings, clamps, conductivity and bonding should be inspected frequently, regularly and consistently, and should be replaced, adjusted or re-tightened for the avoidance of leakage, for the prevention of injuries or damages, and for general safety purposes. Except as indicated in its Limited Warranty, Seller shall not be liable or responsible for direct or indirect injuries or damages caused by or attributed to the failure or malfunction of any Products sold or distributed by it.

Purchasers or users of the Products should frequently and consistently undertake inspections and protective measures with respect to the use and application of Products, which should include the examination of tube and cover, conditions of the hose or tubing, and the identification, repair or replacement of sections showing cracking, blistering, separations, internal and external abrasions, leaking or slipped couplings or connections and make proper proof tests.

## Limited Warranty

The Products sold or distributed by Seller are warranted to its customers to be free from defects in material and workmanship at the time of shipment by us, subject to the following provisions. ALL WARRANTY CLAIMS SHALL BE MADE WITHIN SIX (6) MONTHS AFTER SELLER SHIPPED THE PRODUCTS. SELLER'S LIABILITY HEREUNDER IS LIMITED AT SELLER'S EXCLUSIVE DISCRETION, TO 1) THE PURCHASE PRICE OF ANY PRODUCTS PROVING DEFECTIVE; 2) REPAIR OF ANY DEFECTIVE PRODUCT OR PART THEREOF; OR 3) REPLACEMENT OF ANY DEFECTIVE PRODUCT OR PART UPON ITS AUTHORIZED RETURN TO SELLER.

THIS WARRANTY IS IN LIEU OF AND EXCLUDES ALL OTHER WARRANTIES, EXPRESSED, IMPLIED, STATUTORY, OR OTHERWISE CREATED UNDER APPLICABLE LAW INCLUDING, BUT NOT LIMITED TO, THE WARRANTY OF MERCHANTABILITY AND THE WARRANTY OF FITNESS FOR A PARTICULAR PURPOSE. IN NO EVENT SHALL SELLER OR THE MANUFACTURER OF THE PRODUCT BE LIABLE FOR SPECIAL, INCIDENTAL, OR CONSEQUENTIAL DAMAGES, INCLUDING LOSS OF PROFITS, WHETHER OR NOT CAUSED BY OR RESULTING FROM THE NEGLIGENCE OF SELLER AND/OR THE MANUFACTURER OF THE PRODUCT, UNLESS SPECIFICALLY PROVIDED HEREIN. IN ADDITION, THIS WARRANTY SHALL NOT APPLY TO ANY PRODUCTS OR PORTIONS THEREOF WHICH HAVE BEEN SUBJECT TO ABUSE, MISUSE, IMPROPER INSTALLATION, MAINTENANCE, OR OPERATION, ELECTRICAL FAILURE OR ABNORMAL CONDITIONS, AND TO PRODUCTS WHICH HAVE BEEN TAMPERED WITH, ALTERED, MODIFIED, REPAIRED, REWORKED BY ANYONE NOT APPROVED BY SELLER, OR USED IN ANY MANNER INCONSISTENT WITH THE PROVISIONS OF THE "CAUTIONARY STATEMENT" ABOVE OR ANY INSTRUCTIONS OR SPECIFICATIONS PROVIDED WITH OR FOR THE PRODUCT. 05/03/21 REV

Distributed by:



### HEADQUARTERS AND SALES OFFICE

150 N Martingale Road, Suite 900, Schaumburg, IL 60173-5335  
Phone: (847) 755-0360 • Toll-free Fax: (800) 800-0320

International Fax: (847) 885-0996

[kuriyama.com](http://kuriyama.com)

[sales@kuriyama.com](mailto:sales@kuriyama.com)



## SALES & WAREHOUSE LOCATIONS

### CENTRAL DISTRIBUTION CENTER

#### KURIYAMA OF AMERICA, INC.

14200 Commerce Court  
Huntley, IL 60142

(847) 755-0360

(800) 800-0320

[kuriyama.com](http://kuriyama.com) [sales@kuriyama.com](mailto:sales@kuriyama.com)

### SOUTHWEST WAREHOUSE

#### KURIYAMA OF AMERICA, INC.

– HOUSTON

200 Portwall Street, Suite 100  
Houston, TX 77029

(713) 674-8212 OR (800) 501-6808

(713) 674-5214 OR (800) 800-5214

[sales@kuriyama.com](mailto:sales@kuriyama.com)

### WESTERN WAREHOUSE

#### KURIYAMA OF AMERICA, INC.

– RENO

12910 Old Virginia Road, Suite 100  
Reno, NV 89521

(562) 941-4507

(562) 941-8940 OR (800) 326-8940

[sales@kuriyama.com](mailto:sales@kuriyama.com)

### SOUTHEAST WAREHOUSE

#### FORTNEY SALES CO., INC.

4221 Cantrell Road NW  
Acworth, GA 30101

(770) 427-6528

(770) 423-9249 OR (800) 423-9249

[FortneySales.com](http://FortneySales.com) [sales@fortneysales.com](mailto:sales@fortneysales.com)

### EASTERN WAREHOUSE

#### EASTERN RUBBER & PLASTICS CO., INC.

100 Goldman Dr.  
Plumsted Industrial Park  
Cream Ridge, NJ 08514

(609) 758-0100

(609) 758-0102 OR (800) 445-7138

[EasternRubber.com](http://EasternRubber.com) [sales@easternrubber.com](mailto:sales@easternrubber.com)

### IN CANADA

#### KURI TEC CORPORATION

140 Roy Boulevard  
Brantford, ON, Canada N3R 7K2

(519) 753-6717

(519) 753-7737

[Kuritec.com](http://Kuritec.com) [sales@kuritec.com](mailto:sales@kuritec.com)

### IN MEXICO

#### KURIYAMA DE MÉXICO S DE RL DE CV

Av Jose Palomo Martinez No 520-20 Bodega 5  
Parque Industrial Omolap

Apodaca, N.I. CP:66633, México

(81) 1086-1870 0 71

[Kuriyama.com.mx](http://Kuriyama.com.mx) [Kuriyama.com](http://Kuriyama.com)

[servicioalcliente@kuriyama.com](mailto:servicioalcliente@kuriyama.com)



The trademarks contained in this publication are trademarks of Kuriyama of America, Inc.

©2025 Kuriyama of America, Inc. All rights reserved.

Printed in U. S. A.

KLFP0925